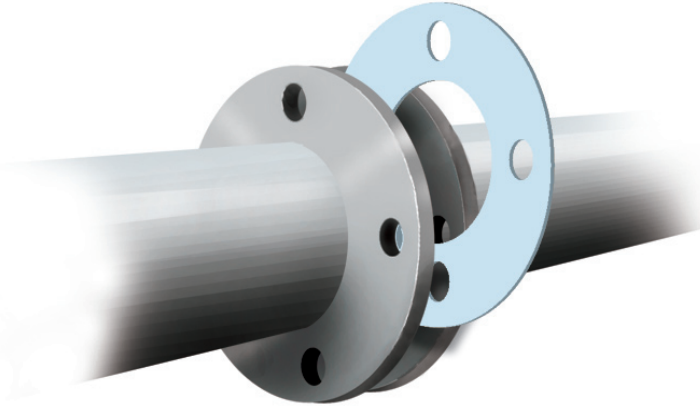


DX Alltra™ 445 ptfе



Alltra™ 445 is a true re-structured PTFE gasket sheet with excellent physical properties to be used in the most demanding applications. Its unique construction which includes premium ptfе resin and glass microspheres limits the cold flow problems associated with skived PTFE sheets. Alltra™ 445 is effective in applications where bolt load is limited by equipment design.

Alltra™ 445 is suitable for a variety of services including aggressive fluids such as acids and caustics, hydrocarbon derivatives, solvents, water, steam, hydrogen-peroxide, refrigerants, etc. FDA compliant with FDA 21 CFR 177.1550. The high compressibility of this style makes it particularly suitable for use with stress sensitive joints too.

DX Alltra 445 Physical Properties

Color	Light Blue
Specific Gravity (g/cm ³)	1.65 g/cm ³
Maximum Service Temperature*	500°F / 260°C
Minimum Service Temperature*	-350°F / -210°C
Maximum Service Pressure*	800 psi
Compressibility (after 1 hour at 210° F) - ASTM F36A	30-50%
Recovery ASTM F36A	30% minimum
Creep Relaxation ASTM F38B	40% max
P x T pressure times temperature 1/16" sheet thickness	350,000 psi / 12,000 bar
P x T pressure times temperature 1/8" sheet thickness	250,000 psi / 8,600 bar
Sealability ASTM F37A (ml/hr)	0.12 ml/hr
Sealability DIN 3535 (cm ³ /min)	< 0.015
FDA Compliant	FDA 21 CFR 177.1550
Tensile Strength	2030 psi / 14 MPa

* Physical properties and values shown are typical. Specific application data should be evaluated for suitability, through independent study. For specific application recommendations consult DXSeal. Failure to select proper sealing products could result in property damage and/or serious personal injury. Specifications are subject to change without notice.